

Deepings Camera Club

Digital Projection Guidance notes for preparing images for the digital competition.

These notes are designed to assist and clarify the requirements for preparing and submitting images for the forthcoming seasons digital projected image competitions. It is important that the image size, image type and labelling requirements are followed exactly so that your images will be accepted and also projected correctly.

By taking care to correctly prepare and present your images you will ensure that your images are viewed as you would wish them to be and save me lots of frustration.

Summary of requirements:

Image size: Images must be sized to have a maximum pixel dimension as follows:

Portrait oriented images are always projected within the above frame size so they must therefore be **no more than 768 pixels high**.

Similarly landscape oriented images must be **no larger than 1024 pixels at the base and 768 pixels high**.

The output resolution of the image is irrelevant as the only important size is the actual pixel dimensions.

If one of the dimensions is less than as given above, this is unimportant although you may wish to fill the resulting blank space with a black mask using Photoshop.

You may even create some sort of frame or background within the frame size to show off your image more artistically. The choice is yours.

Image Format: Images must be in **JPEG format (.jpg)** and should be saved in the highest quality setting (in Photoshop this is using quality setting 12)

Image File names: What name you give your files really doesn't matter as each file will contain the data required for the competition using the method described below using the Windows "File Properties" function.

However it is always wise to use filenames which mean something to you, such as **owl.jpg**

Projection Colour Space: The projection software will be utilising **sRGB** colour space to present the images.

If you normally work within the Adobe RGB (1998) colour space you should ensure that your competition files are converted to sRGB colour space when you save them.

Most judges agree that over sharpening and loss of tone detail due to excessive editing of JPEG files is the biggest problem experienced when judging projected image competitions so do be aware of this.

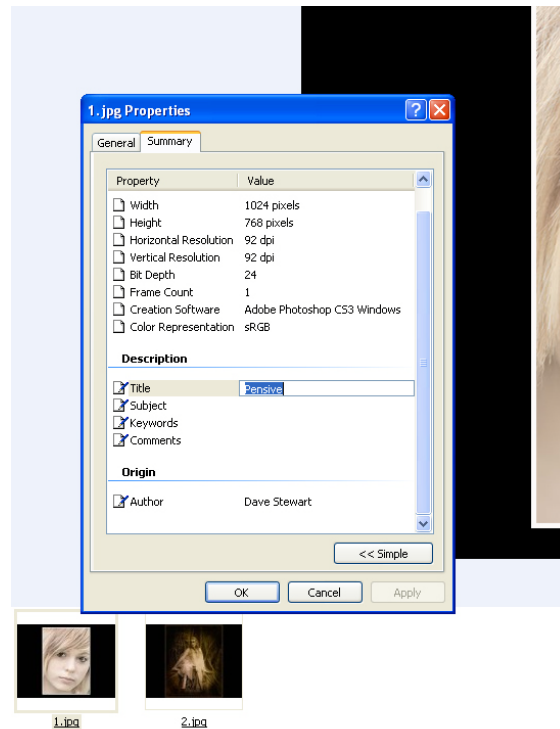
Addition of "File Properties" information: This is VERY IMPORTANT as without this information being added to your files they will not be accepted for competition.

Each file can have certain information applied to it and recorded by Windows and other operating systems within the header data of the file. This information is used by our projection software to identify the Author, and Title of the image.

After creating and saving your competition images in their final form, for each file carry out the following procedure.

Addition of “Properties” Data:

1. Navigate to the file using the Windows file browser or Explorer.
2. Right Mouse Click on the file to bring up the file menu. Choose “Properties” (the last menu item).
3. Choose the “Summary” Tab in XP or “Details” Tab in Vista and you should see something like this..



If you see a more complex screen in XP, click the “Simple” button.

4. In the “Title” field enter the title for your image (maximum 40 characters)
5. In the “Author(s)” field enter your full name. Finish the entry by clicking the “Apply” button then “OK”
6. Always use the same format for your name.

Once this data is entered you can upload your entry using the online entry system or you can email them direct to me at dave@xtreme-action-images.com.

I can accept entries on cd or USB memory sticks up to one week before the competition, but online entry or email direct is to be preferred.

Please, please help to reduce my stress levels by carefully following these instructions.